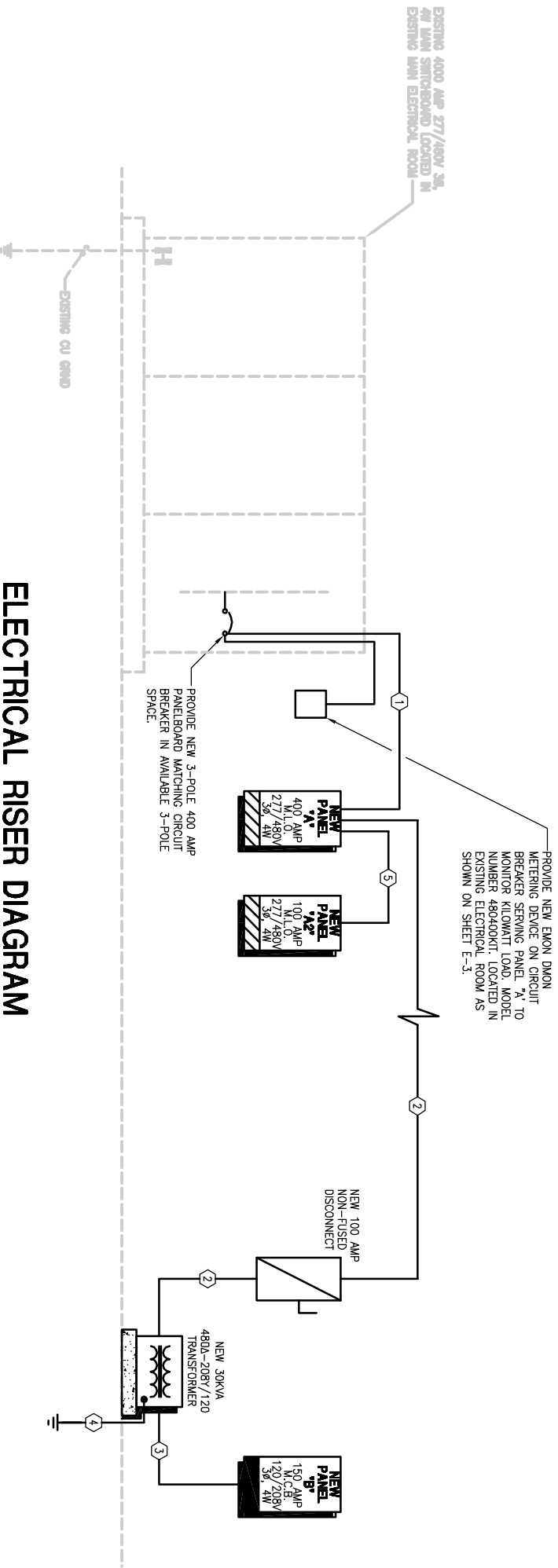


WIRE AND CONDUIT SCHEDULE

SYMB	COPPER CONDUCTORS			REMARKS	
	PER/PHASE	NEUTRAL	GROUND		
1	#500 KCMIL	#500 KCMIL	#3 AWG	4"	--
2	#4 AWG	----	#6 AWG	1-1/4"	--
3	#1/0 AWG	#1/0 AWG	#6 AWG	2"	--
4	----	----	#3 AWG	1"	--
5	#3 AWG	#3 AWG	#6 AWG	1-1/4"	--



ELECTRICAL RISER DIAGRAM

NTS