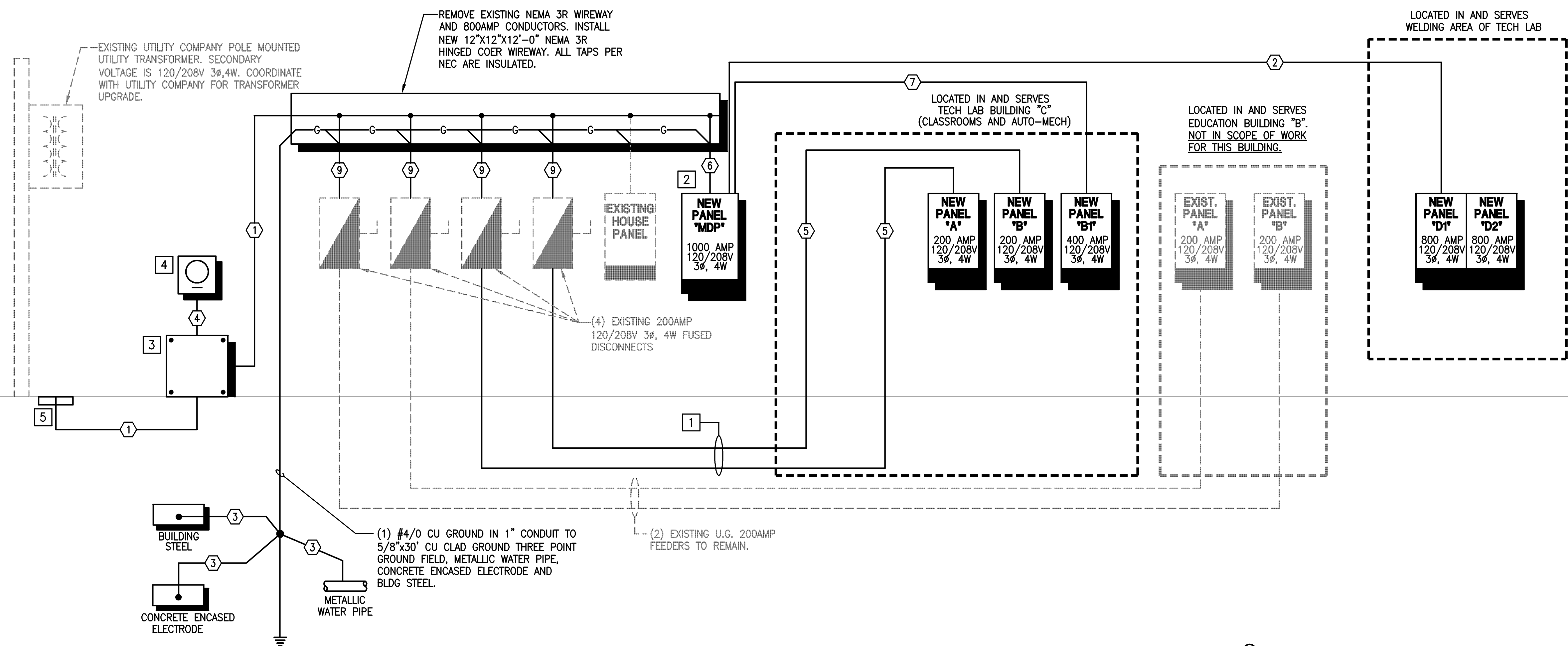
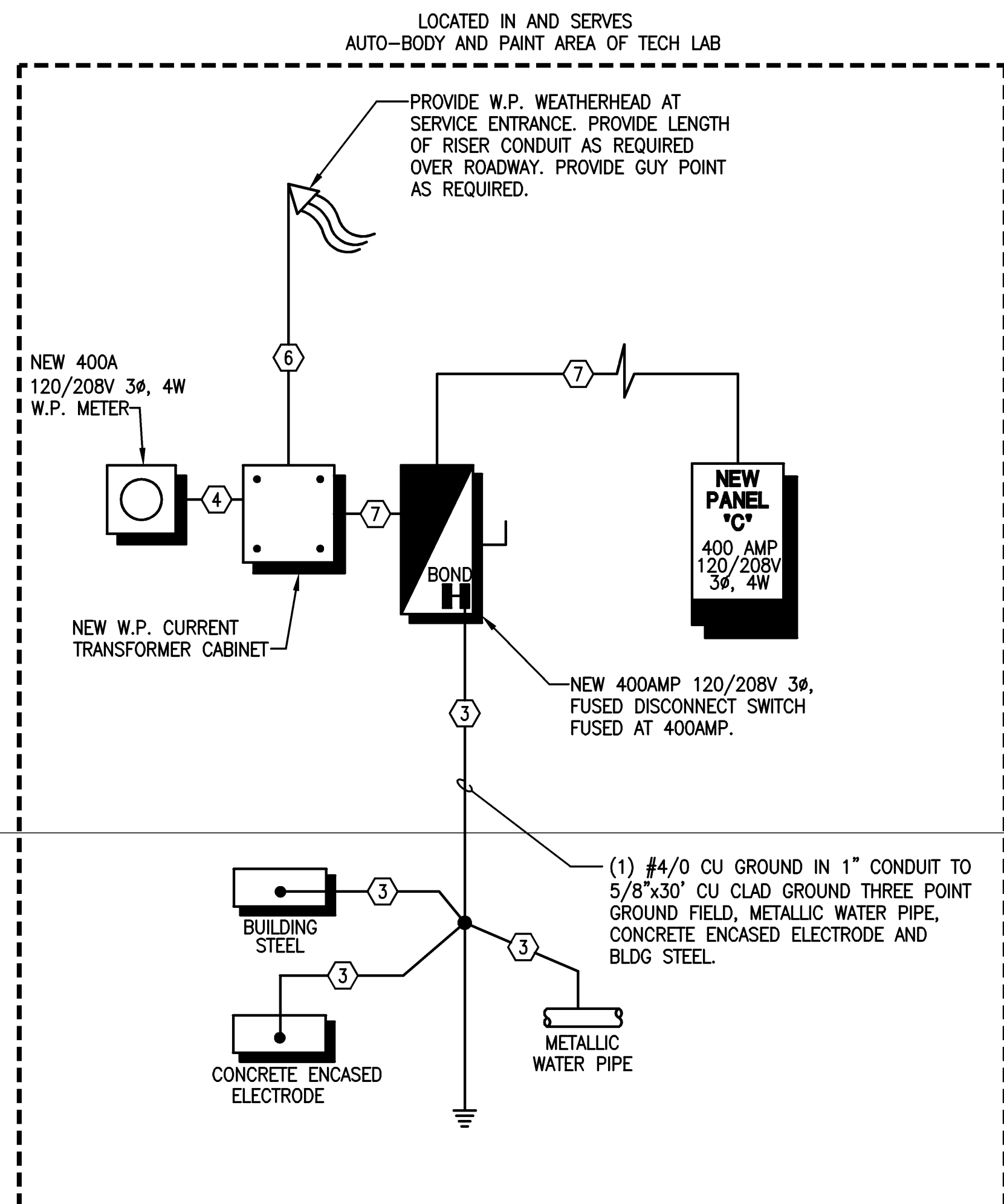


## WIRE AND CONDUIT SCHEDULE

SYMBOL	COPPER CONDUCTORS			
	PER/PHASE	NEUTRAL	GROUND	CONDUIT
①	#500 KCMIL X 4 PARALLEL SETS	#500 KCMIL X 4 PARALLEL SETS	---	(4) 4"
②	#500 KCMIL X 2 PARALLEL SETS	#500 KCMIL X 2 PARALLEL SETS	(2) #1/0 AWG	(2) 4"
③	---	---	#4/0 AWG	1"
④	#12 PULL WIRE	---	---	1-1/4"
⑤	#3/0 AWG	#3/0 AWG	#6 AWG	2"
⑥	#400 KCMIL X 3 PARALLEL SETS	#400 KCMIL X 3 PARALLEL SETS	(3) #3/0 AWG	(3) 4"
⑦	#500 KCMIL	#500 KCMIL	#3 AWG	4"

## REFERENCE NOTES

- 1 REMOVE EXISTING 200AMP FEEDER AND FEEDER CONDUIT AND INSTALL NEW TO PANELS "A" AND "B" AS INDICATED. INSTALL NEW 200AMP FUSES.
- 2 120/208V 3Ø, 4W NEMA 3R 1000AMP M.C.B. PANELBOARD PER NEC.
- 3 REMOVE EXISTING AND INSTALL NEW C.T. CAN.
- 4 INSTALL NEW METER CENTER.
- 5 CONNECT NEW FEEDER TO UTILITY CONNECTION POINT. FIELD VERIFY THE EXACT LOCATION,



## ELECTRICAL RISER DIAGRAM

NTS